

State of Wyoming Corner Record

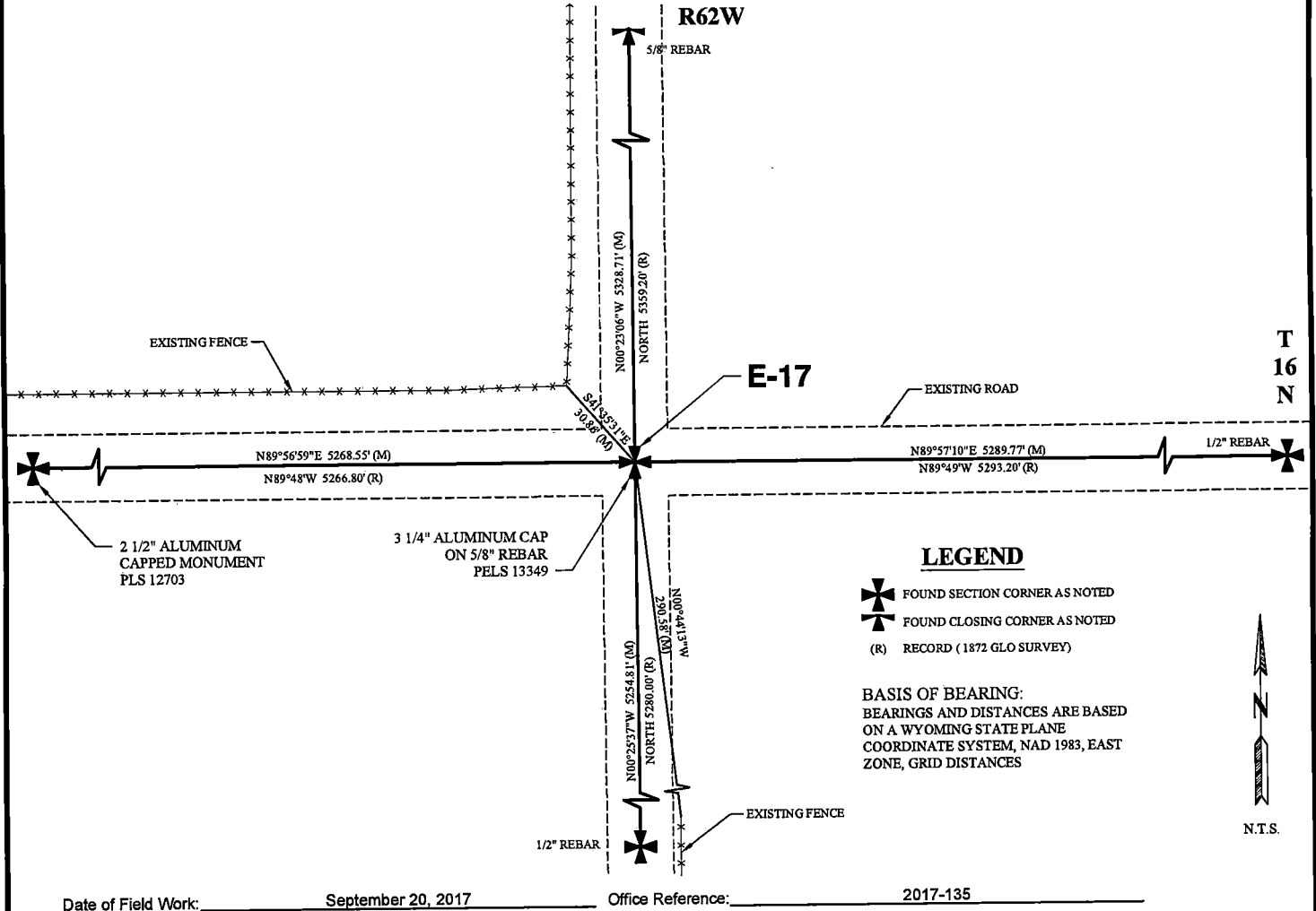
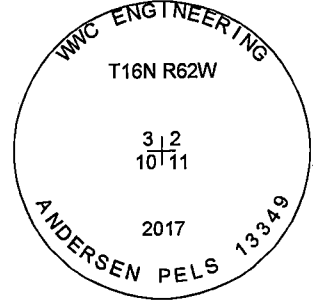
(In compliance with the CORNER PERPETUATION AND FILING ACT, Wyoming Statutes, 1997, Section 33-29-140, et seq., and the Rules and Regulations of the Board of Registration for Professional Engineers and Professional Land Surveyors)

Reverse side of this form may be used if more space is needed.

Record of original survey and citation of source of historical information (if corner is lost or obliterated.) Description of corner monumentation evidence found and/or monument and accessories established to perpetuate the location of this corner. Sketch of relative location of monument, accessories, and reference points with course and distance to adjacent corner(s) (if determined in this survey). Method and rationale for reestablishment of lost or obliterated corner.

EVIDENCE RECORD: 1872 GLO Survey: North between sections 10 & 11, 80.00 chains. Set sand stone 20"x10"x4" for corner to sections 2, 3, 10 & 11.

EVIDENCE FOUND: September 2017: Sand stone from 1872 GLO survey not found. Accepted north-south east-west road intersection as best available evidence for the corner to sections 2, 3, 10 & 11. Set a 3 1/4" aluminum cap marked as shown on a 5/8" rebar, 24" long, 2" below ground surface at road intersection.



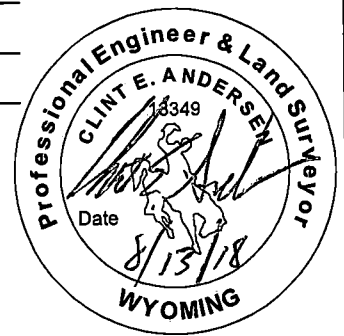
Date of Field Work: September 20, 2017 Office Reference: 2017-135

CROSS INDEX DIAGRAM

1	2	3	4	5	6	7	8	9	10	11	12	13	14	15	16	17	18	19	20	21	22	23	24	25	
A																									A
B																									B
C		6				5						4					3							2	C
D																									D
E																									E
F																									F
G																									G
H																									H
J																									J
K																									K
L																									L
M																									M
N																									N
O																									O
P																									P
Q																									Q
R																									R
S																									S
T																									T
U																									U
V																									V
W																									W
X																									X
Y																									Y
Z																									Z
1	2	3	4	5	6	7	8	9	10	11	12	13	14	15	16	17	18	19	20	21	22	23	24	25	

Land Surveyor / Firm / Address
Clint E. Andersen
WWC Engineering
51 N. 15th Street, Suite 1
Billings, MT 59101
 Telephone: (406) 894-2210

This corner record was prepared by me or under my direction and supervision.
 SEAL & SIGNATURE



Corner Name: Northeast Corner Section: 10 T 16N R 62W; 6TH P.M. Cross-Index No.: E-17
 SBRPEPLS/PLSW: March 1994; PLSW January 1998